

*CM+ Enterprise sets the
standard for next generation
Application Lifecycle Management*

C
M
+
E
N
T
E
R
P
R
I
S
E

Next Generation SCM

CM+ Enterprise, the only 4th Generation SCM solution, lets you focus on core development. CMII Certified, CM+ gives you both control and peace of mind, while covering all the Application Lifecycle Management functions: Request and Requirements Management, Document Management, Project/Task Management, Version Control, Configuration and Change Management, Problem Tracking, Build and Release Management, Test Case/Run Management. Out of the box, CM+ is ready in minutes to import existing data for use in your evaluation.

SEAMLESS INTEGRATION. ALM functions are integrated into one tool, seamlessly. Users see one interface customized to their roles. Training is simplified. All lifecycle data resides in a common repository accessible by all functions. A common process engine supports state flows, rules, triggers, role definition, and permissions. Administration and upgrades are performed on a single tool. No scripting glue holds the solution together - don't look for the seams, they're not there.

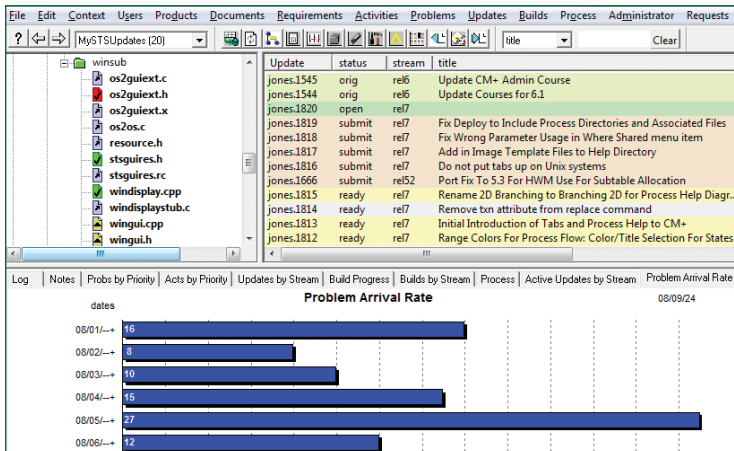
ADVANCED EASE-OF-USE. A role-based, object-oriented user interface makes CM+ natural and easy to use. Role-specific, interactive dashboards give overviews of the entire product or project. Zoom-in capabilities allow drill-down and instant traceability navigation. Customized to-do lists, dialogs and process help provide user/role guidance. Context views simplify working with multiple streams and revisions, and provide file system visibility to CM revisions. Active workspace management identifies the user's workspace state without even asking. Source code searching and change-based check-in, promotion, delta and merge increase developer productivity.

CM+ ENTERPRISE KEY FEATURES

- Seamless Integration of all ALM Functions
- Ease-of-Use Cuts Training, Boosts Productivity
- Near-Zero Administration, High Performance
- Customizable UI, Process and Data Schema
- CM+ MultiSite for Secure Global Operation
- Industry's Most Powerful, Mature CM Process
- Mission-Critical Reliability and Availability
- Process-Centric Role-Based Model



PROCESS-CENTRIC ROLE-BASED MODEL. CM+ was designed to support flexible, project-specific processes. Detailed logging of data changes and automated email triggers are easily enabled. State flow diagrams are color-coded by state, as are data displays, gantt charts, and graphs, giving visual feedback. User interfaces align to roles. Add to this full ITAR data segregation out of the box.



MISSION-CRITICAL RELIABILITY. CM+ has unsurpassed reliability in the industry. There are multiple fail-safe capabilities: warm-standby disaster recovery keeps information accessible; automated checkpoints with roll back/forward protect against data sabotage; advanced source storage dramatically reduces backup volume; transaction journaling tracks all repository history; a long history of customer data integrity gives peace of mind.

MATURE CM PROCESS. No vendor has been doing advanced CM longer than Neuma. We introduced the industry to: change packages, seamless integration, stream-based development, synchronous multi-site, 2D version control, and active workspace management. CM+ is the only CMII Certified SCM tool. Change packaging, built-in, not an

add-on, permits change-oriented CM. Coupled with stream-based development, branching, merging and labelling are minimized, eliminating education on complex strategies. Instead, CM+ tells the user when to branch or merge. Labelling is automatic, based on user actions and context. Baseline generation is automated. First order objects for builds, branches and changes ensure strong process support.

LOW ADMINISTRATION, HIGH PERFORMANCE. CM+ means near-zero administration. The high-speed, admin-free integrated repository scales to millions of records/files. A smart client, cross-platform architecture maintains performance as the number of users grow. You won't need a full-time CM+ administrator.

EXTENSIVE CUSTOMIZATION CAPABILITIES. Customize process state flows, rules, triggers and permissions. Define new roles or modify existing ones. Add fields to support process: data, notes, files, references, lists, titles, etc. Customize menus, tabs, to-do lists, dashboards, process help, dialogs, forms, and queries - advanced technology reduces cost.

SYNCHRONOUS MULTISITE. Only CM+ MultiSite provides full repository replication in real-time. All sites act as if they were a single central site. Move from one site to another without missing a beat. Add new sites easily, with near-zero administration.

As a 4th Generation SCM tool, CM+ lets you enjoy the industry's most advanced and mature features, at the lowest cost of operation. An entire seamlessly integrated ALM suite for far less than you'd expect to pay for the CM component alone, and with almost no operating overhead. An SCM dream come true: CM+ Enterprise!



<http://www.neuma.com>
E-MAIL: sales@neuma.com